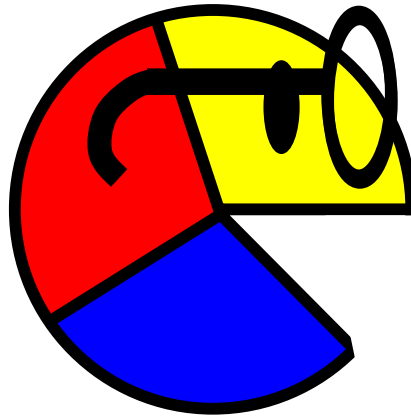


Smarty Pie

A Windows Utility from Commonwealth Software
“Learn what’s eating your disk space”



Contents

| | |
|---|---|
| Overview..... | 2 |
| Proportional Navigation..... | 2 |
| The Drive Pie..... | 3 |
| The Folder Pie..... | 4 |
| The File Pie..... | 4 |
| How Smarty Pie Works with Windows Explorer..... | 5 |
| About Commonwealth Software..... | 6 |

COMMONWEALTH
SOFTWARE

Copyright 2001-2005 by Steve Carpenter, Commonwealth Software
www.commonwealthsoftware.net

Overview

Welcome to *Smarty Pie*, a small program that's intended to leverage the usefulness of a very large program, *Windows Explorer*. It's an **interactive pie chart** that controls Explorer in a new and productive way, especially when you have a disk drive that is running out of space.

When you start *Smarty Pie*, it begins analyzing the drive on which the program file itself (*SmartPie.exe*) is saved. If this is not the disk you want to analyze, click **Cancel** to stop the operation so you can select another disk.

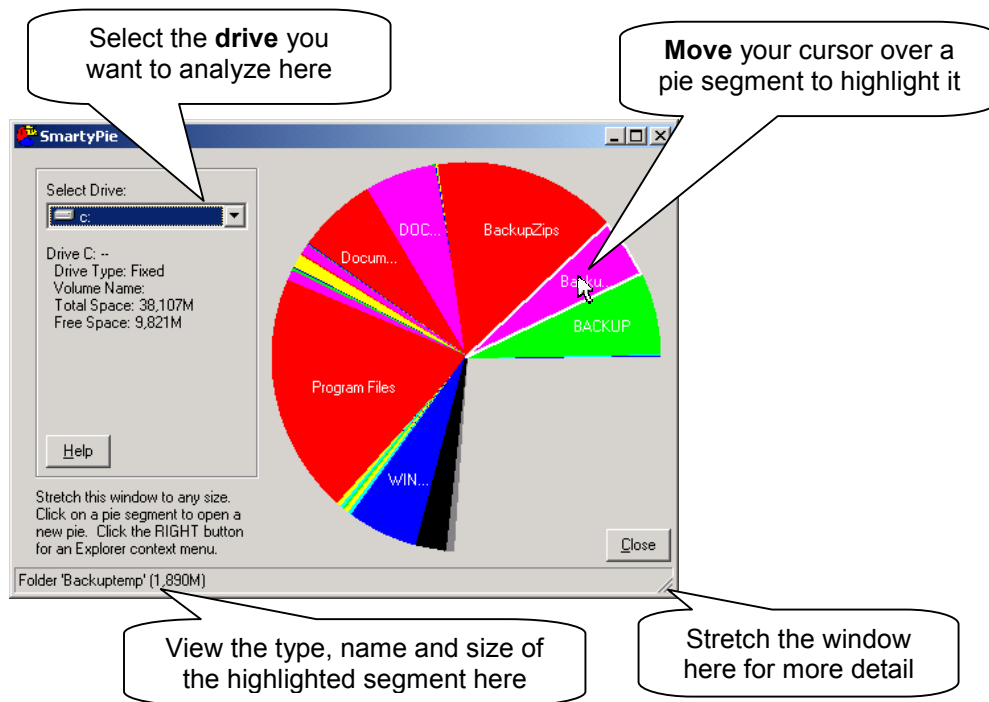


Proportional Navigation

Smarty Pie provides a **proportional navigation interface**, a read-only view of the Windows File System, which displays the files and subfolders in a disk or folder in a way that is proportional to the space occupied by those files or subfolders. The bigger a file or folder, the larger the pie segment that represents it. The larger the segment, the easier it is to open it as another pie and to view its contents proportionally too.

The *Smarty Pie* interface does not perform any active operations on the drive – deleting, opening or moving files or folders. All of these operations are done using *Windows Explorer* itself, which is available at any time through a single right-click of the mouse.

The Drive Pie



The **drive pie** is the only pie that's not a complete circle (unless the drive is completely full). The active segments represent occupied areas in the drive; the remainder represents free space.

- Brightly colored segments represent **folders**
- A black segment represents **files**
- A dark gray segment represents **blocked areas**

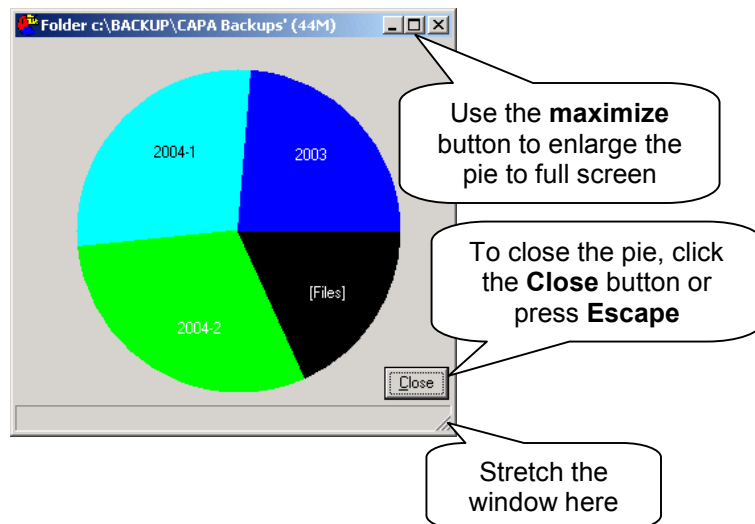
Where the access level of user accounts affect the amount of the drive that is visible to users, it is best to use *Smarty Pie* under a user account that has full administrative access. Otherwise you'll see a large blocked area.

Click on any segment to open a new pie: a **folder pie** if it's a folder segment; a **file pie** if it's a file segment.

Right-click on any segment to bring up the *Windows Explorer context menu* which lets you open files, view folders in detail, move and delete folders and files.

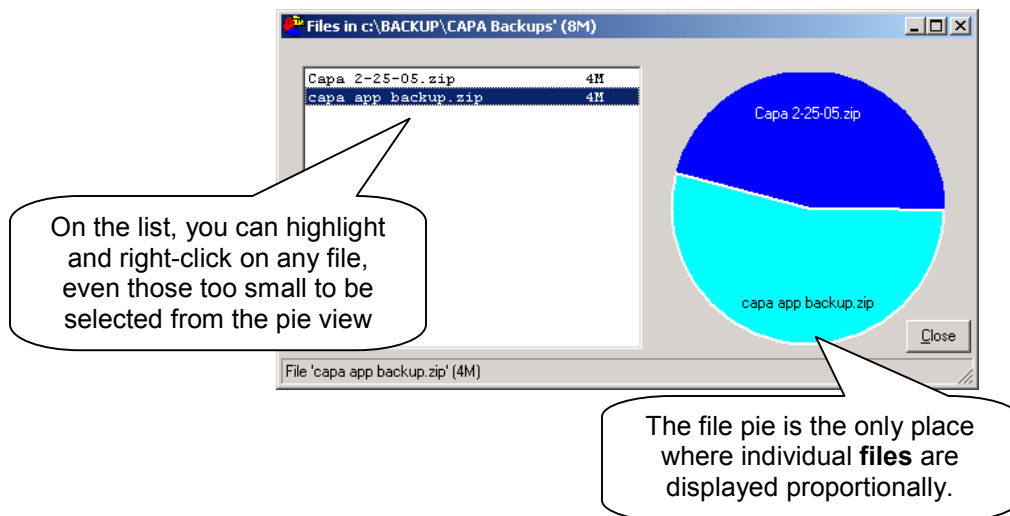
The Folder Pie

Opening a folder brings up a folder pie, which in turn can contain folders or files. It resembles the drive pie except that it's always a complete circle. Left-click or right-click on any segment to go further



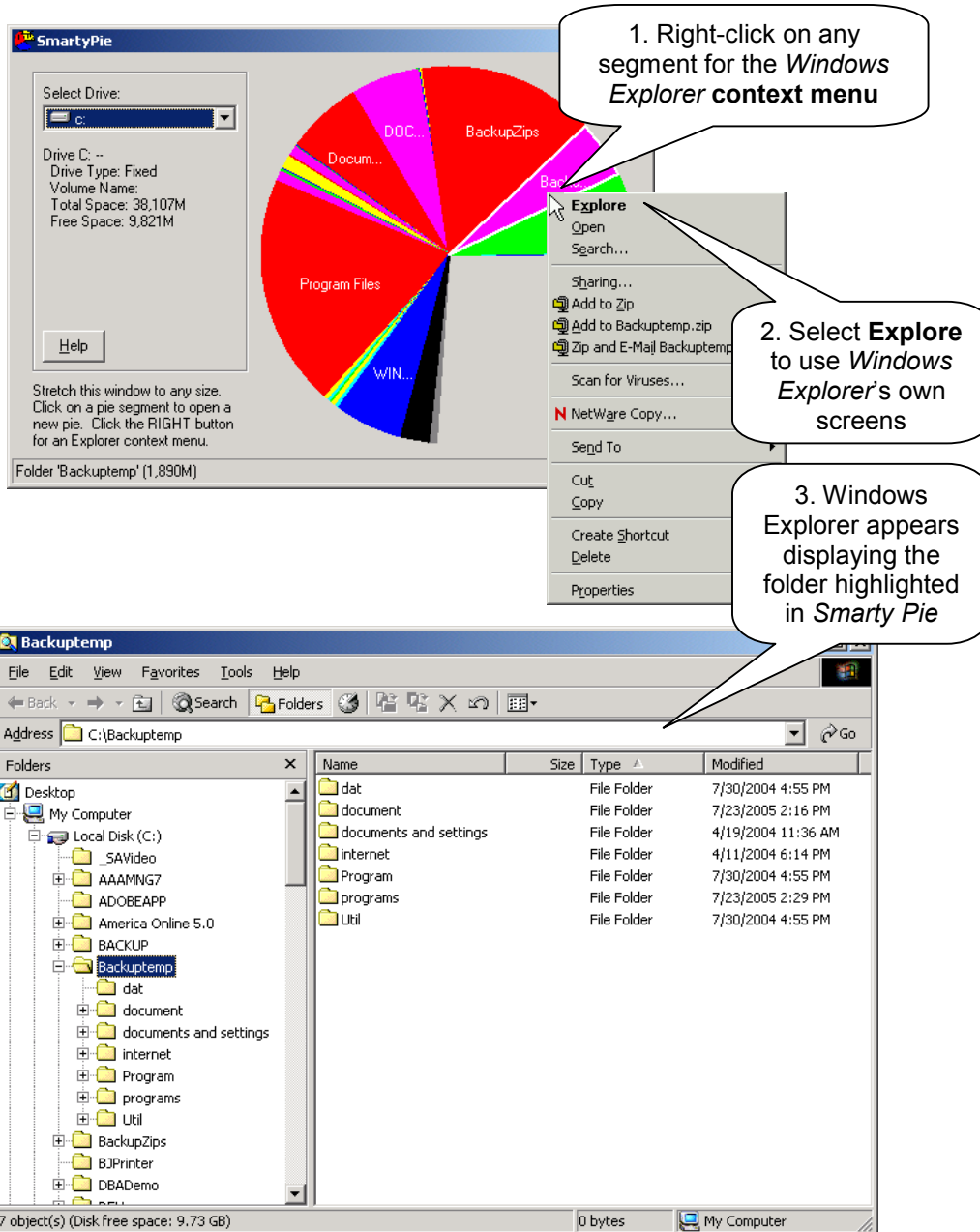
The File Pie

If you left-click on a black [Files] segment, it brings up the **file** pie, which shows a pie representing files proportionally on the right, and a complete list of files on the left. Once again, this is a very simple list with no attempt to duplicate the rich functionality of *Windows Explorer*. This is the only pie where individual files are displayed proportionally.



How Smarty Pie Works with Windows Explorer

While *Smarty Pie* makes no attempt to duplicate the rich functionality of *Windows Explorer*, it does make every effort to make Explorer's functionality available instantly from anywhere you are in *Smarty Pie*'s distinctive proportional representation of the Windows file space.



With a single right click on a folder or other segment, you can have a list of everything registered in the Windows context menu system that can be done with the item (file, folder, program, document) represented by that segment. Then you can –

- Select an operation from the list or –
- Select Explore to open Explorer's own screens and to select from the numerous operations that can be performed through Explorer.

In itself, *Smarty Pie* is a **read-only** view of the file system as long as you remain within it. Unless you bring up the *Windows Explorer* context menu and select an operation from it, nothing will happen that changes anything in the system. But while it doesn't do anything to your files by itself, through its unique proportional method of navigation *Smarty Pie* can leverage the power of Explorer in a new and productive way.

About Commonwealth Software

COMMONWEALTH SOFTWARE is a small application programming company owned by Steve Carpenter, who has been developing microcomputer-based systems in the areas of scientific research, manufacturing and government for more than 20 years.

- Custom Programming
- Database Applications
- Platform Migration
- System Documentation
- Imaging, Graphics, Visualization

Although Commonwealth Software does not typically develop general-purpose Windows utilities, it does place special emphasis on the development of small programs that, like *Smarty Pie*, leverage the usefulness of much larger programs, adding significant value to an organization's information technology investment.

<http://www.commonwealthsoftware.net>

I want to express special thanks to Brad Martinez (<http://btmtz.mvps.org>) for superbly crafted and documented code to manage the Windows shell context menu. – S. C.